



All content in this presentation is licensed under a Creative Commons Attribution-NonCommercial-ShareAlike 4.0 International. Learn more [here](#).

# The Green Office Model: Empowering students and changing institutions

13:00 – 13:15 Introduction and getting to know each other

13:15 – 13:45 Presentation and Q&A

13:45 – 14:45 Exercise

14:45 – 15:00 Closure

Workshop – 26.09.2017





# The Green Office (GO) Model



This presentation is based on three assumptions



✓ Sustainability matters



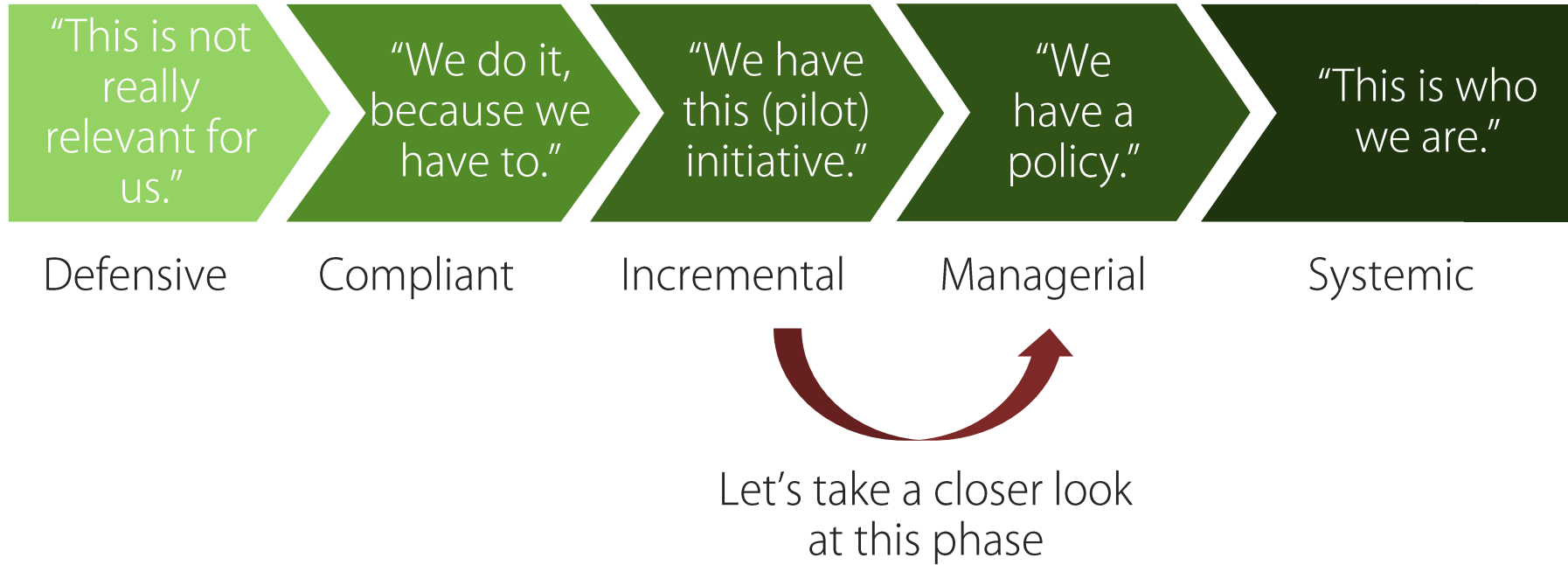
✓ Universities matter



✓ Students matter

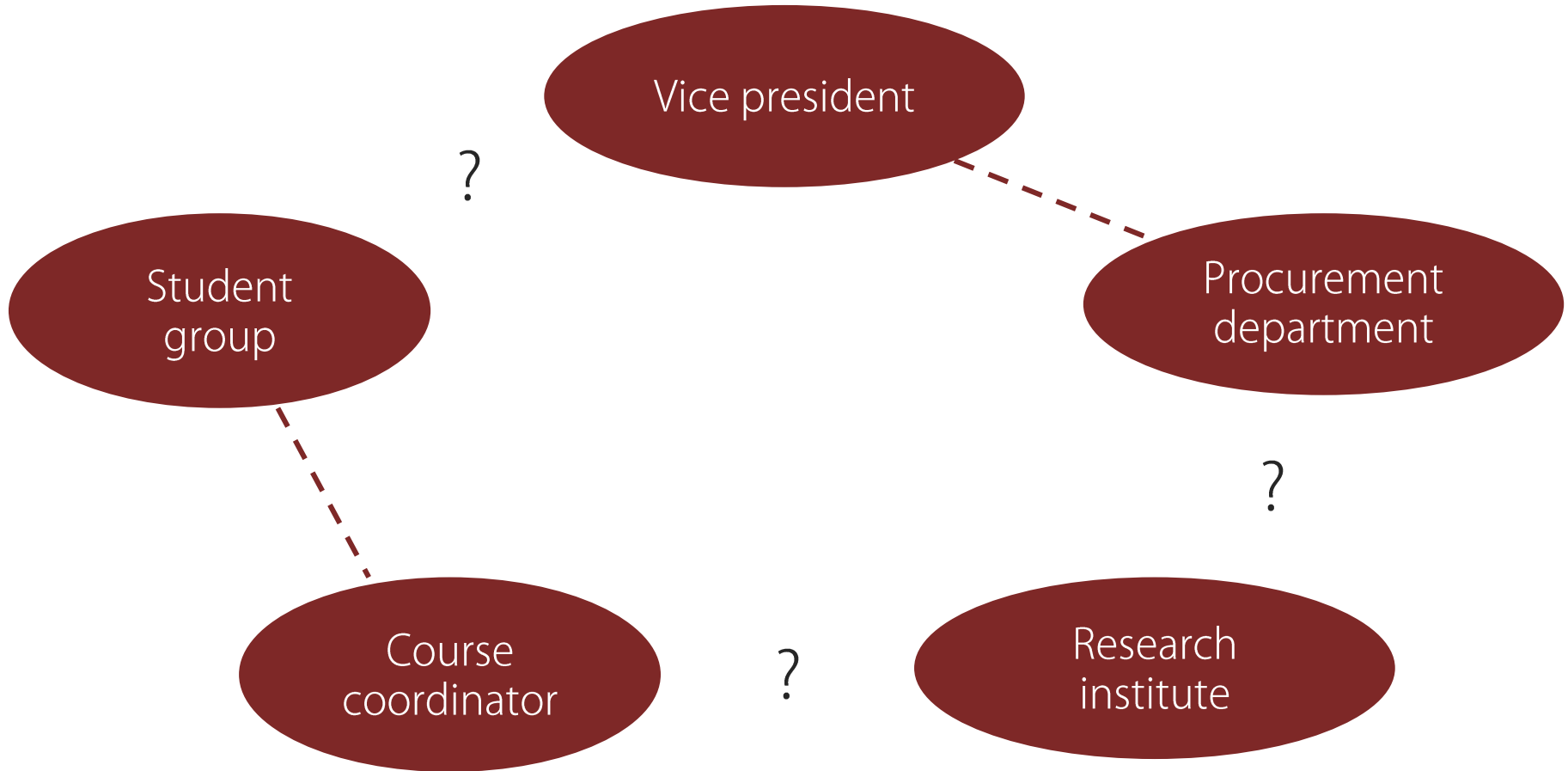


Your institution might be at different phases of the change process



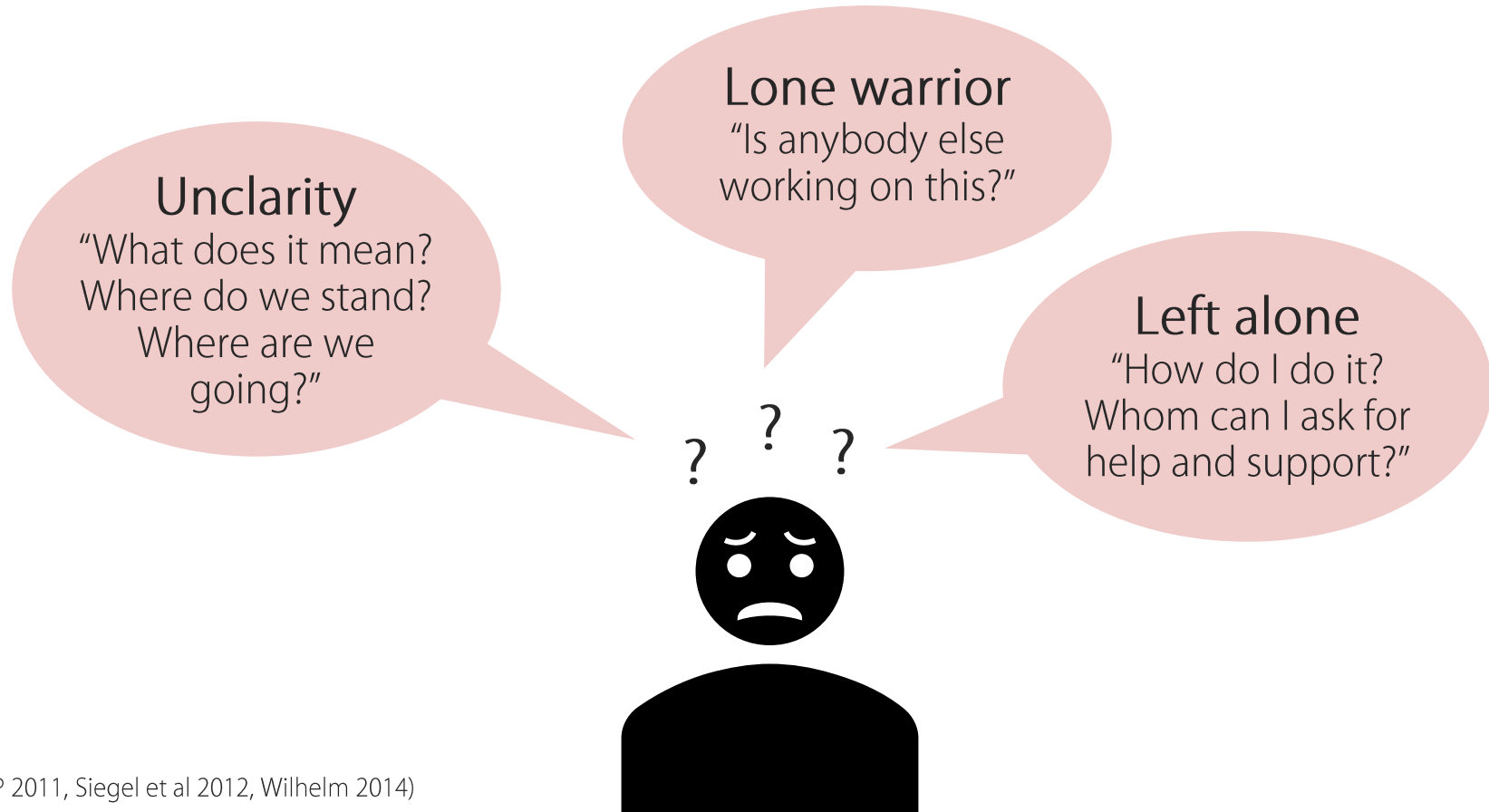


Sustainability is often practiced in disconnected islands of activity



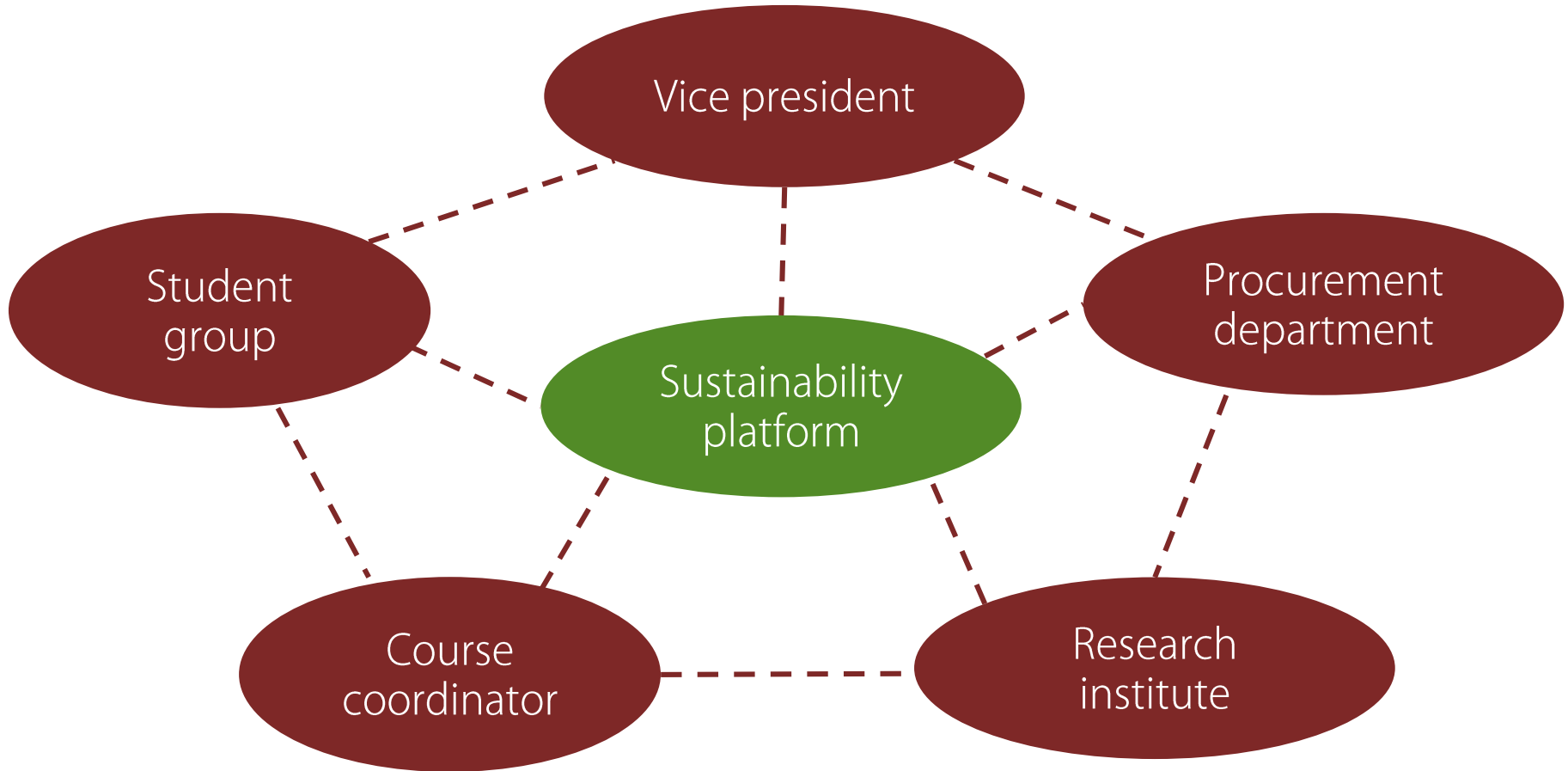


# Disconnection prevents synergy effects for people to work together





A sustainability platform informs, connects and supports





# Our approach: Green Office Model

**A sustainability hub that informs, connects and supports students, staff and academics to act on sustainability.**



## **BOTTOM-UP**

Led by students and staff  
to scale-up engagement



## **TOP-DOWN**

Mandate, funding,  
legitimacy



## **OPEN-SOURCE**

Adapt as suits your  
context



# Green Office Movement

23 Universities

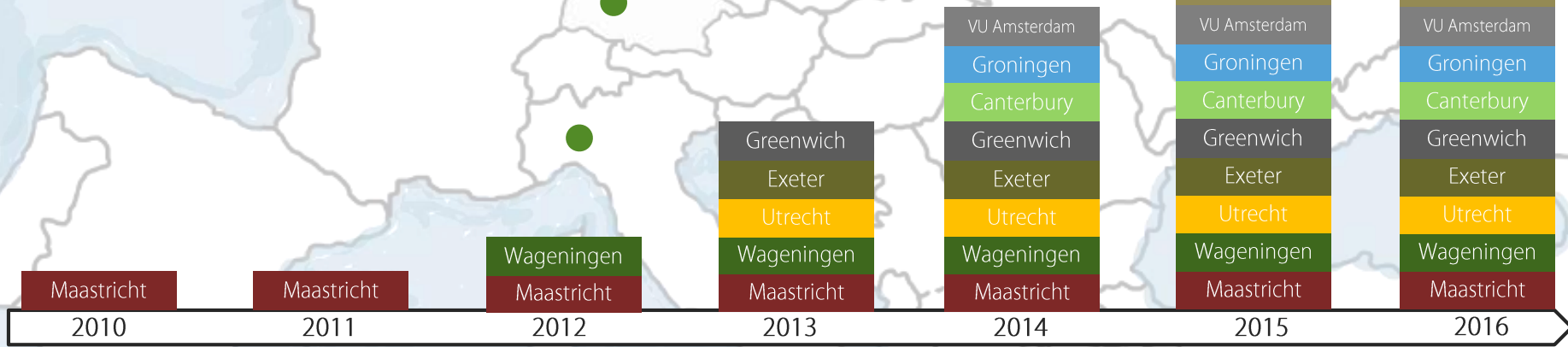
3 Unis of applied sciences

1 Government organisation

1 College

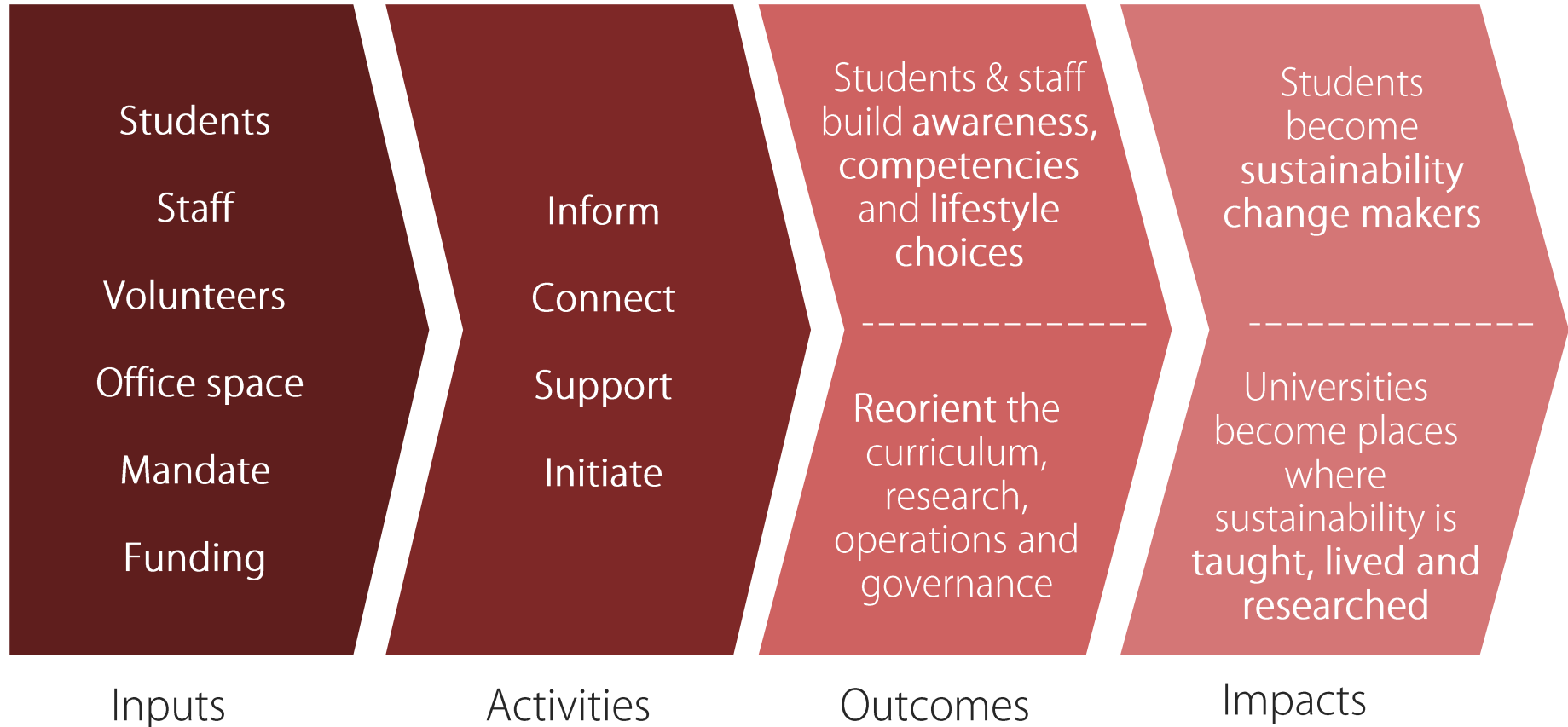
1 Municipality

UNESCO-Japan Prize on Education  
for Sustainable Development  
Laureate 2015





A dedicated impact chain is the essence of the model





# Examples of organisational changes achieved

## Education & research

- New sustainability **minor and honours** course for 50 students (VU Amsterdam)
  - Accreditation of **online course** as new sustainability qualification (Konstanz)
- 

## Operations & campus

- Increased recycling of **e-waste** +180% (Maastricht)
  - Daily **vegan** meal options in cafeteria (Utrecht)
  - **Fair Trade** University Accreditation (TU Eindhoven)
- 

## Policy & Assessment

- Sustainability integrated into university's **strategic plan** (Kaiserslautern)
- Sustainability vision, roadmap and policy (Maastricht)
- First official **sustainability report** (Magdeburg)



A GO informs, connects and supports students and staff to act

### Inform

- Organised 20 **sustainability events** for 400 participants (Groningen)
- Co-created **sustainability week** with 8 student initiatives (Konstanz)

### Connect

- 30 students developed **sustainable business cases** for 5 local organisations (Leiden)
- **Car-sharing platform** for students and staff (Hildesheim)

### Support

- **Volunteering** programme for 60 students (VU Amsterdam)
- Funding and training for 40 students to run **40 events and long-term projects** (Exeter)



# Inputs of the 'typical' Green Office



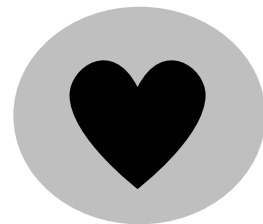
## 5 STUDENTS

(9 hrs paid & 5 hrs voluntary;  
425 € / month)



## ONE STAFF

(70% in core team, 30%  
staff contact)



## 20 VOLUNTEERS

(50% of GOs work with  
volunteers)



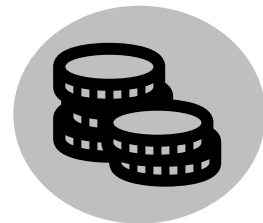
## OFFICE

(Permanent or shared /  
flexible)



## MANDATE

(90% from Executive Board; 10%  
from commissions or Facility  
Service)



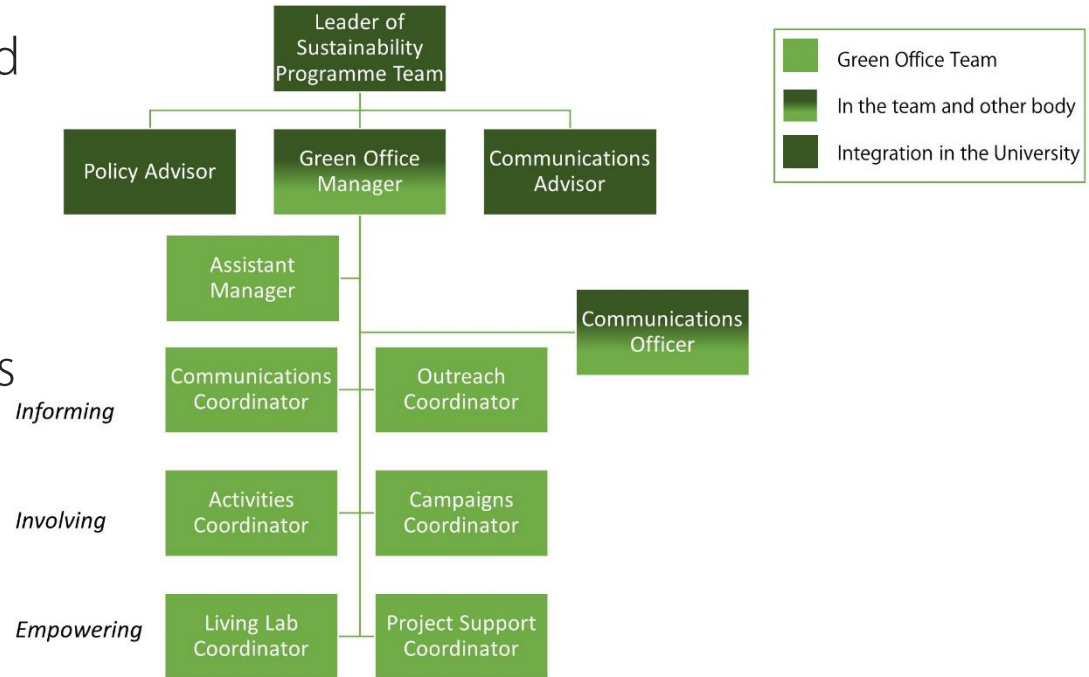
## FUNDING

(60,000 € on  
average / year)



# Case study: Green Office Utrecht University

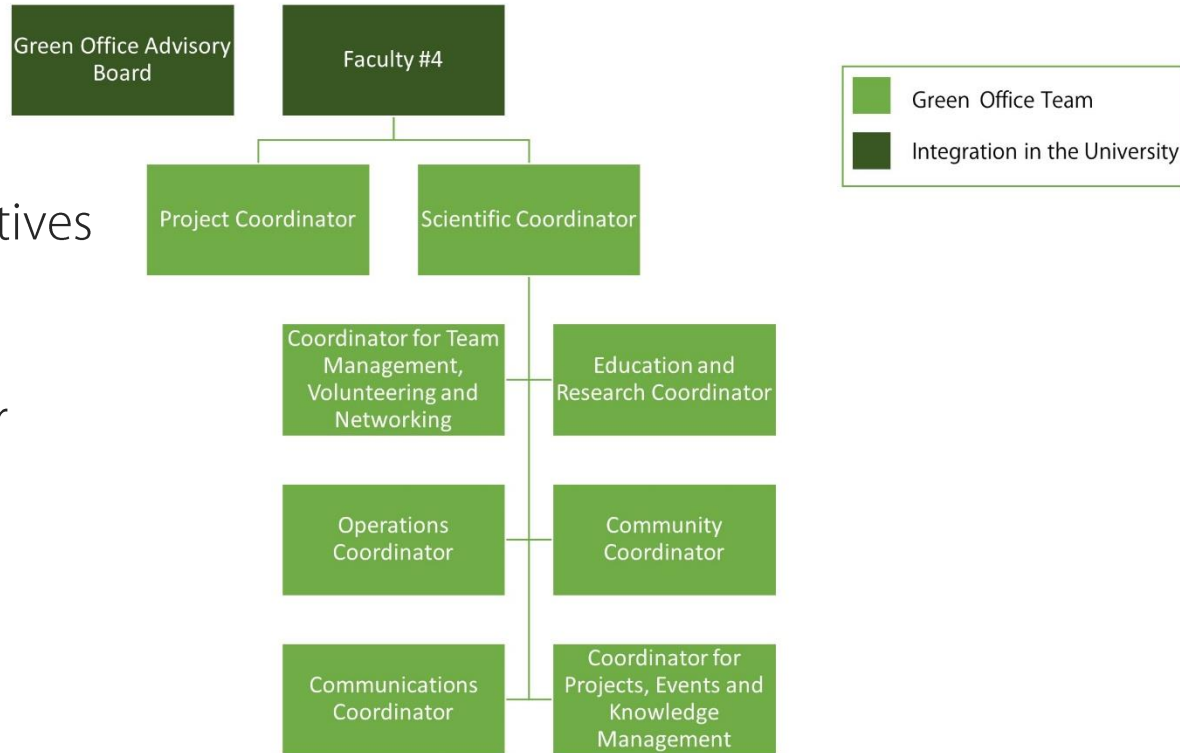
- Organises large SusTasty food festival every year
- Hands out 2,000 EUR in annual project funding to student projects
- Lobbied to have vegan meals available every day





# Case study: Green Office Universität Hildesheim

- Published an overview of existing sustainability initiatives
- Established a car sharing platform
- Developed Green Guide for students





You should be aware of the following risks

Not being taken too seriously by the institution

GO used as reason not to take any other actions

Using GO as an easy target to blame things on

Continuity and quality loss due to bad transitioning

Role clarity within the organisation



# A GO can easily be integrated with other governance structures

## Dedicated roles

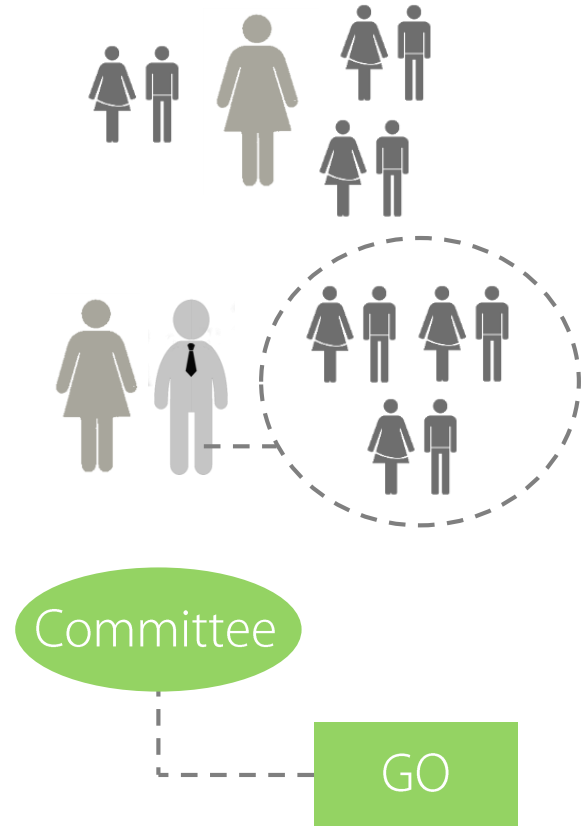
- Individual working on sustainability, environment, health and safety, well-being, etc.

## Department

- Staff working on energy, waste, engagement, communication, director

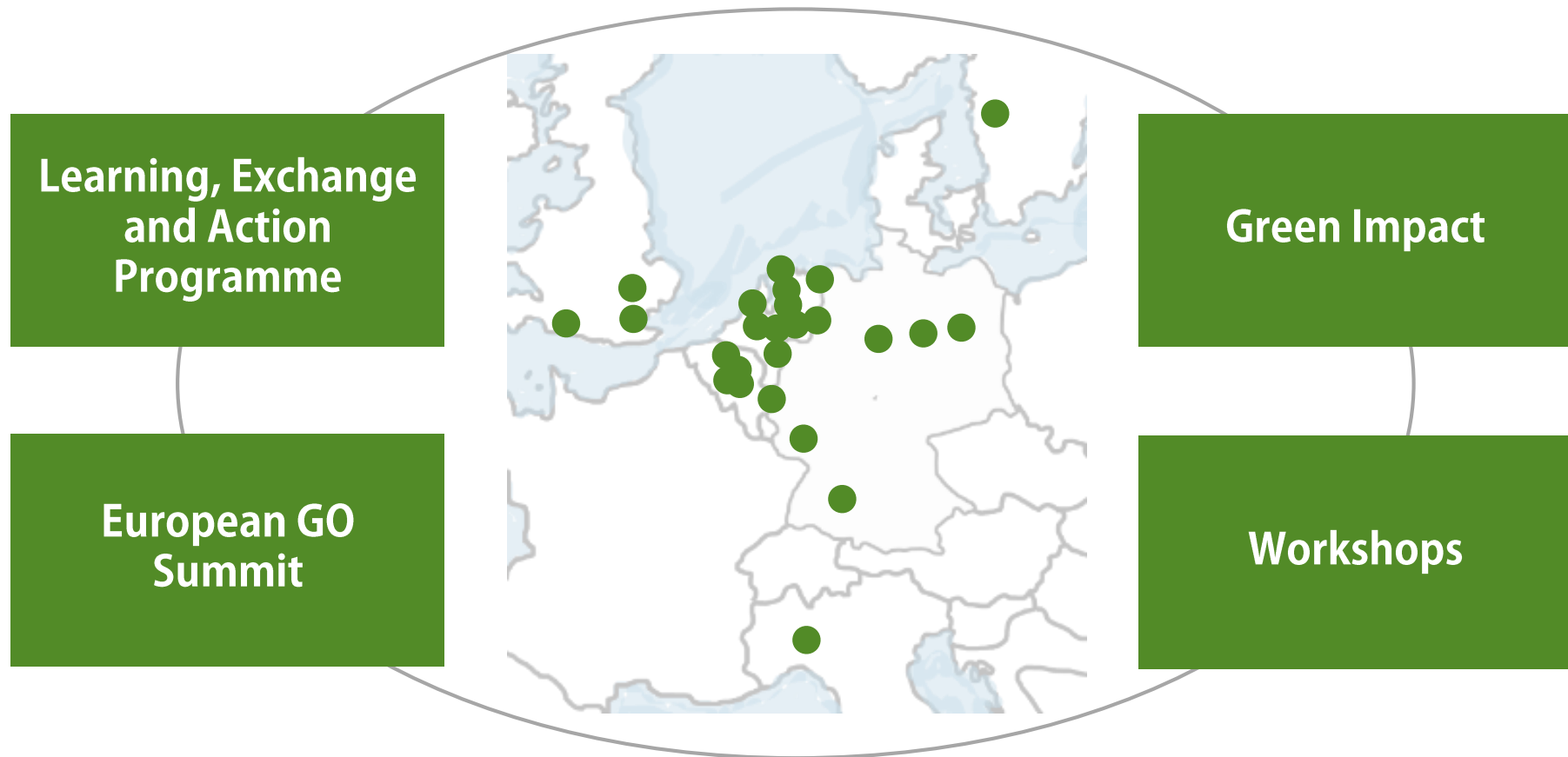
## Committee

- Only staff or with student representatives
- Decision making or only advisory status





Every GO is invited to join the GO Movement & work with rootAbility





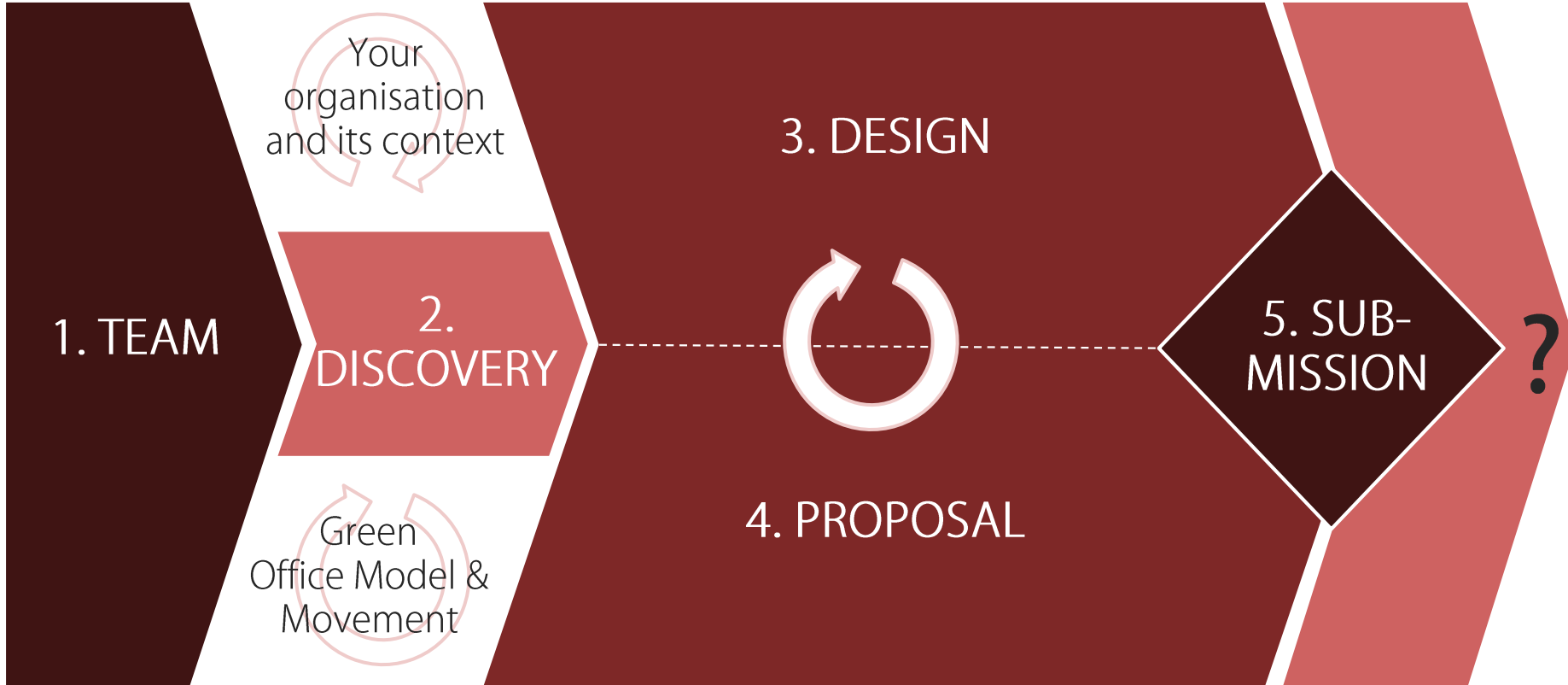




**Sustainability: What is already happening at your institution?**



# Take five steps to establish your GO





## Task I: Identify existing sustainability efforts (individually)

| Domain               | Your answers (examples)   |
|----------------------|---|
| Education & research | <ul style="list-style-type: none"><li>▪ Bachelor and Master courses</li><li>▪ Research institutes</li><li>▪ Professorships</li></ul>                    |
| Operations & campus  | <ul style="list-style-type: none"><li>▪ Energy manager</li><li>▪ Solar cells on engineering faculty building</li><li>▪ Energy Efficiency Plan</li></ul> |
| Policy & strategy    | <ul style="list-style-type: none"><li>▪ Sustainability report or policy</li><li>▪ Sustainability committee or group</li></ul>                           |
| Student groups       | <ul style="list-style-type: none"><li>▪ oikos, enactus, sneep, etc.</li><li>▪ Environmental officer in Students' Union</li></ul>                        |



## Task I: Share what you found (on table)

| Domain               | Your answers (examples)   |
|----------------------|---|
| Education & research | <ul style="list-style-type: none"><li>▪ Bachelor and Master courses</li><li>▪ Research institutes</li><li>▪ Professorships</li></ul>                    |
| Operations & campus  | <ul style="list-style-type: none"><li>▪ Energy manager</li><li>▪ Solar cells on engineering faculty building</li><li>▪ Energy Efficiency Plan</li></ul> |
| Policy & strategy    | <ul style="list-style-type: none"><li>▪ Sustainability report or policy</li><li>▪ Sustainability committee or group</li></ul>                           |
| Student groups       | <ul style="list-style-type: none"><li>▪ oikos, enactus, sneep, etc.</li><li>▪ Environmental officer in Students' Union</li></ul>                        |



## Task II: Analysis of existing sustainability efforts (individually)

| <b>Strengths &amp; opportunities</b>  | <b>Challenges &amp; risks</b>   |
|---|---|
| <ul style="list-style-type: none"><li>▪ High student engagement</li><li>▪ Support by Executive Board</li><li>▪ Etc.</li></ul> | <ul style="list-style-type: none"><li>▪ No overview what is happening</li><li>▪ Funding cuts in recent years</li><li>▪ Etc.</li></ul> |



## Task II: Share what you found (on table)

| <b>Strengths &amp; opportunities</b>  | <b>Challenges &amp; risks</b>   |
|---|---|
| <ul style="list-style-type: none"><li>▪ High student engagement</li><li>▪ Support by Executive Board</li><li>▪ Etc.</li></ul> | <ul style="list-style-type: none"><li>▪ No overview what is happening</li><li>▪ Funding cuts in recent years</li><li>▪ Etc.</li></ul> |



Learn everything you need to know about the GO Model

[www.greenofficemodel.org](http://www.greenofficemodel.org)



e-Book



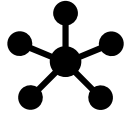
Case  
studies



Temp-  
lates



# We can support you in the set-up process



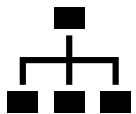
Assistance with mapping and analysing existing sustainability efforts



3 hours workshop with 15-20 students and staff to present, discuss and design your GO



Proposal writing advice and feedback



Lobby process advice

4-8 months



# Join the Movement !



→ Learn more on [www.greenofficemodel.org](http://www.greenofficemodel.org)



→ Follow regular updates on [Facebook](#)



→ Send us your questions via [Email](#)



→ [Find](#) and visit a GO (initiative) near you



→ Set up a [30min initiation call](#)



Maastricht University  
Green Office



Universiteit Utrecht



rootAbility

